



509L LONG WALL MINING GAUGE

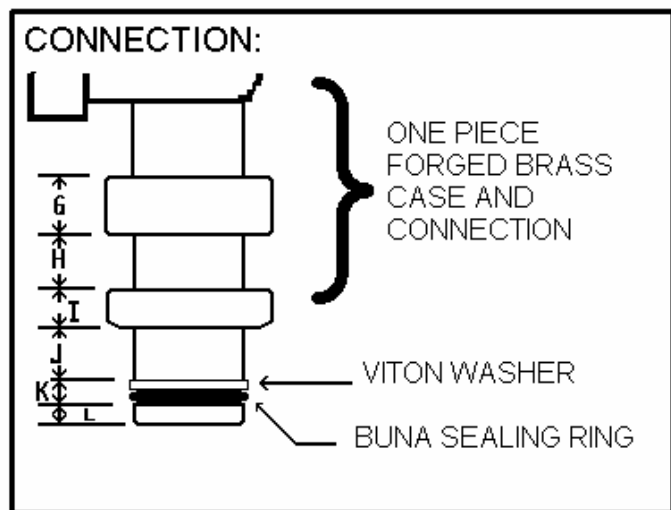
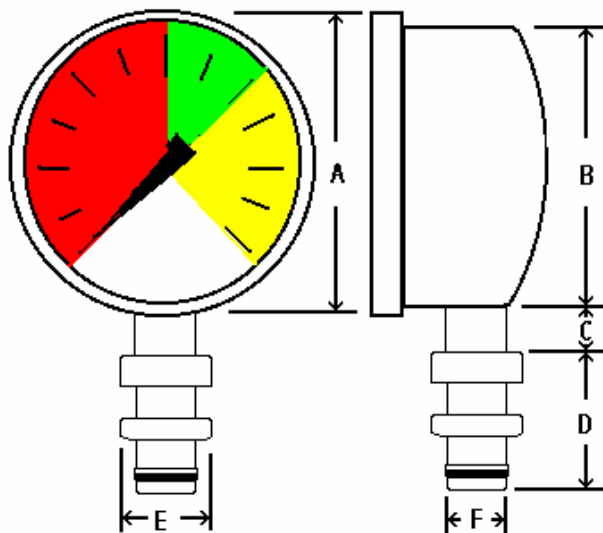
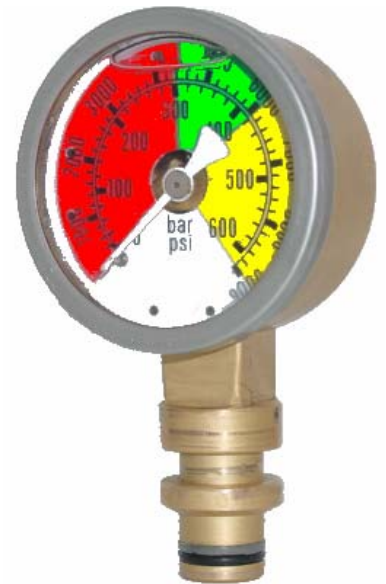
Our '509L' gauge is a high quality liquid filled gauge designed specifically for the mining industry. With a heavy duty one-piece forged brass case and connection this gauge is built to be extra durable.

The silicone filling helps dampen the effects of pulsation and vibration, while also perpetually lubricating the movement, keeping contaminants such as dirt and coal away from all moving parts, which will extend the life of the gauge. What makes it specific to the mining industry, is the special quick connect bottom connection and 0-9000 psi triple color dial.

This gauge has been specifically designed with original equipment manufacturers in mind. It is typically used on the cylinders for the roof support shields on long wall mining equipment and hydraulic systems for the mining industry.

SPECIFICATIONS:

- **Dial Sizes:** 2" Diameter
- **Connection:** "Steck-o" Type Mining Industry Standard Special Hydraulic Quick Connect with Buna Sealing O-Ring and Viton Washer.
- **1pc Forged Brass Case and Connection**
- **Stainless Steel Bezel**
- **Plastic Lens**
- **Brass Internals**
- **Phosphour Bronze Bourdon Tube**
- **Liquid Filled (Dry Available)**
- **Accuracy :** Standard = 1.5 %
- **Dual Scale:** 9000 PSI & 600 Bar w/ Red, Green & Yellow Zones
- **Ambient temperature:**
 - Liquid Filled :** 30°F to 160°F
 - Dry :** -30°F to 180°F



		A	B	C	D	E	F	G	H	I	J	K	L
2"	In	2.1	1.96	.44	1.13	.785	.55	.30	.20	.19	.19	.125	.125
Dial	MM	53.34	49.78	11.18	28.70	19.94	13.97	7.61	5.08	4.82	4.82	3.17	3.17