

RECTANGLE (EDGE) GAUGE

- Suitable for air, water, oil, gas or any other media not corrosive to brass.
- Mounting accessories (Mounting Brackets) available.
- Ready for immediate shipment upon request.

SIZE:

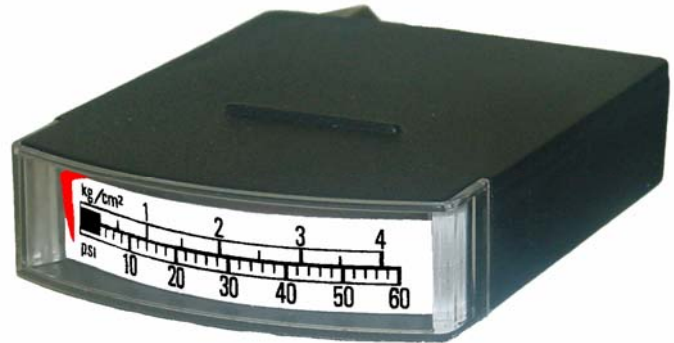
1 3/4" x 1/2" HORIZONTAL OR VERTICAL

CONNECTION SIZES:

10-32" Female Thread Or
1/32" Hose Barb Connection

GENERAL SPECIFICATIONS:

Plastic Case , Polycarbonate Lens
Brass Bourdon Tube
Single Or Dual Scale
5 % Accuracy Full Scale
Ambient Temperature: -50 To 160°F
With Or Without Mounting Bracket



SCALE:

DUAL SCALE: PSI & KG/cm2 STANDARD
SINGLE SCALE: PSI ONLY AVAILABLE
OTHER: BY SPECIAL REQUEST

